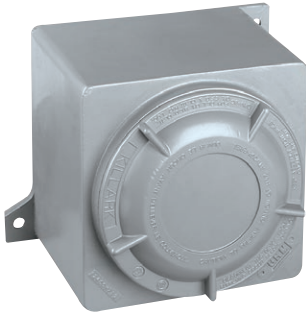
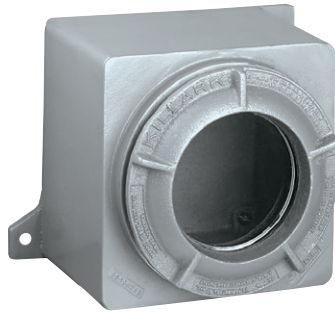


THREADED ENCLOSURES



Box with blank cover



Box with lens cover



Box with dome cover



GR Empty Enclosures

NEC / CEC Certifications

Class I, Div. 1 & 2, Groups B, C, & D

Class I Zone 1 IIB+H2 Gb

Class II, Div. 1 & 2, Groups E, F, & G

Class III

Type 3, 4, 4X

Ta = -25°C to +40°C (UL)

Ta = -50°C to +40°C (CSA)



File E83969, File E10514



Certificate LR11716 - 1820607



File 2Y4A5.AE

ATEX / IEC Ex Certificate



II 2 G D CE 2813

Ex d IIC Gb T6 or T5

Ex tD A21 T80°C or T90°C

Service Temperature -20°C to +40°C

PTB ATEX1071U

PTB ATEX1072

IECEX PTB 05.0028U

IECEX PTB 05.002

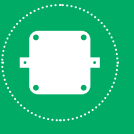
FEATURES-SPECIFICATIONS

Features

- Compact square or rectangular enclosure with threaded screw type cover provide easy access to interior
- Can be shipped in component parts and still maintain third party UL-CSA-FM approvals
- Available in three different cover types: flat blank, lens and dome covers
- Cast mounting lugs are standard on all assemblies
- Available as blank box or can be custom drilled and tapped for conduit openings which may be factory or field installed on the four sides or back wall
- Gaskets are standard on all assemblies and with covers when component part ordering
- Internal ground screw supplied on all boxes
- CEN suffix modification for ATEX/IEC Ex certification includes an external ground screw, cover locking screw, and nameplate displaying certification and area classifications. Feature is only available on complete assemblies and not available when component part ordering.

Materials

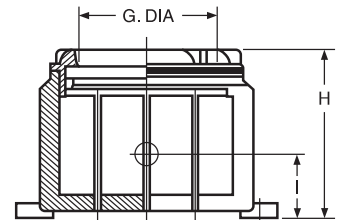
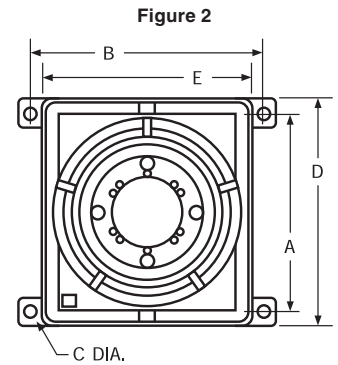
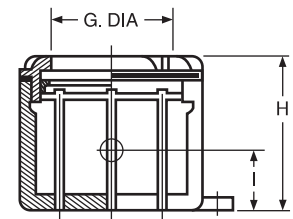
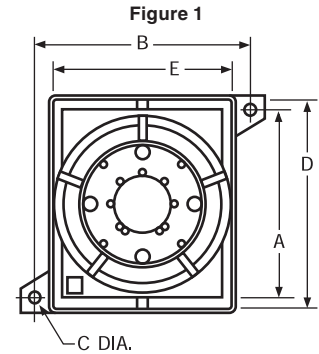
- Enclosures:
Copper-free aluminum
(less than 1/10 of 1%)
- Optional Mounting Pans:
Sheet aluminum
- Lens Cover Glass:
Tempered soda lime glass
- Cover Gaskets:
GRB, GRE, GRM, GRK, GRL
70 Durometer NITRILE
GRH, GRHA, GRHC
57 63 Durometer BUNA-N
- Finish: Electrostatically applied gray powder epoxy/polyester on box exterior and cover



INSTRUMENT ENCLOSURES

DIMENSIONS

RECOMMENDED GR ENCLOSURE BASED ON INSTRUMENT MODEL (INSTRUMENTS NOT SUPPLIED)				
CATALOG NUMBER	MANUFACTURER	INSTRUMENT		
		MODEL	SIZE	TYPE
GRM-375L52	Weston	1930 Series	3-1/2"	Rectangular
		301 Series	3"	Rectangular
		301 Series	3-1/2"	Round
GRM-375L52	General Electric	KT w/o reset	3"	Rectangular
		KT w/o reset	3-1/2"	Round
GRM-375L52	Cutler Hammer	R-351	3"	Rectangular
		B-351 w/o reset	3"	Rectangular
		N-351	3-1/2"	Round
GRM-375L52	Simpson	27, 27T, 37, 47, 57, 77 Series	3"	Rectangular
		2100 Series	3-1/2"	Rectangular
		25, 25T, 35, 45, 55 Series	3-1/2"	Round
		55ET	3-1/2"	Round
		75	3-1/2"	Round
		1300 Series	3-1/2"	Rectangular
		3223	3-1/2"	Round
3323	3-1/2"	Rectangular		
GRM-375L52	Cutler Hammer	N-371 Series	4-1/2"	Round
GRK-537L52A	Cutler Hammer	R-371 Series	4"	Rectangular
GRK-537L52A	Simpson	3224	4-1/2"	Round
GRK-537L52A	General Electric	250, 162, 167, 251 Series	3-1/2"	Rectangular
		178 Series	4-1/2"	Rectangular
		171 Series frequency meter	4-1/2"	Rectangular
		236 w/o Reset	3-1/2"	Rectangular
GRK-537L52B	Weston	1940 Series	4-1/2"	Rectangular
GRK-537L52B	General Electric	AB/DB-30 AC ammeter	4-1/2"	Rectangular
		AB/DB-30 AC/DC ammeter	4-1/2"	Rectangular
GRL-600L52B	General Electric	AB/DB-40 AC ammeter	4-1/2"	Rectangular
		DB-40 DC ammeter	4-1/2"	Rectangular
GRK-537L52B	General Electric	DB-40 DC voltmeter	4-1/2"	Rectangular
		171, 250, 251 Series	4-1/2"	Rectangular
		29, 29T, 39, 49, 59, 79, 1300, 2100 Series	4-1/2"	Rectangular
GRL-600L52C	Simpson			
GRH-775L52B	General Electric	AB/DB-40 AC voltmeter	4-1/2"	Rectangular



GR DIMENSIONS									
CATALOG NUMBER	FIG. NO.	A	B	C	D	E	G	H	I
GRM-375L52	1	5-7/8"	8-1/8"	5/16"	6-7/8"	6-7/8"	3-9/16"	6-13/32"	2-5/8"
GRK-537L52A	1	9-1/8"	9-1/8"	5/16"	9-7/8"	7-7/8"	4-7/8"	6-11/16"	2-1/2"
GRK-537L52B	1	9-1/8"	9-1/8"	5/16"	9-7/8"	7-7/8"	4-7/8"	6-11/16"	2-1/2"
GRL-600L52B	1	9-1/2"	10-1/2"	7/16"	10-1/2"	8-7/8"	5-13/16"	7-17/32"	2-3/4"
GRL-600L52C	1	9-1/2"	10-1/2"	7/16"	10-1/2"	8-7/8"	5-13/16"	7-17/32"	2-3/4"
GRH-775L52B	2	10-3/4"	12-1/8"	7/16"	12"	11"	7-7/16"	8-3/4"	3"